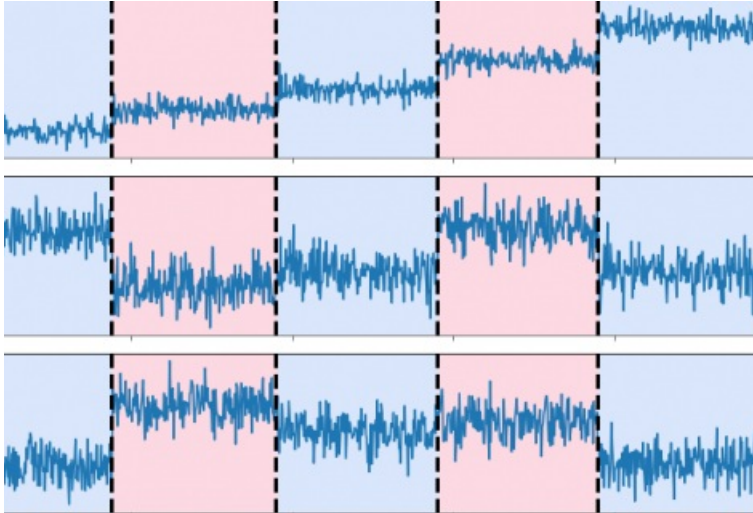


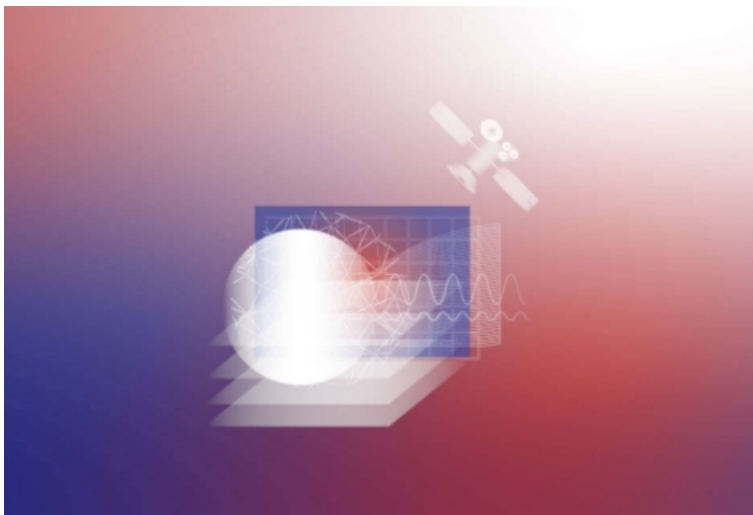
# Software

**The centre Borelli and its researchers develop and make available to the scientific community tools and software solutions.**



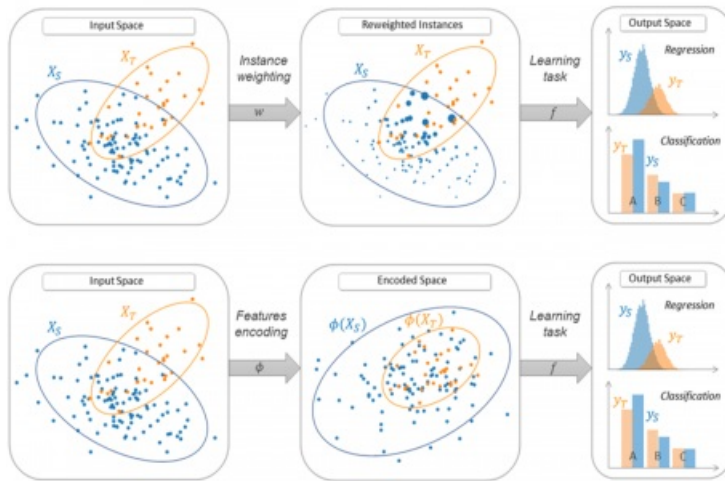
## Software Python/Ruptures

Python/Ruptures is a Python library for off-line change point detection that provides methods for the analysis and segmentation of non-stationary signals.



## Satellite Stereo Pipeline

S2P is a processing chain developed at the Centre Borelli, in collaboration with CNES, which allows the estimation of 3D information from pairs of stereo images taken by satellite.



## The ADAPT package

The ADAPT package is an open source library providing numerous tools to perform Transfer Learning and Domain Adaptation.